

End-to-End

The Parish Magazine of Rivenhall and Silver End



**Some of the Beautiful Flowers in the Church on Easter Sunday
And the cremated remains memorial.**

May

2022

50p

The Following are our services For May 2022

1st May

9.30 am St Francis

11 am St Mary's

8th May

9.30 am Silver End

11.15 am St Mary's

15th May

9.30 am St. Francis

11 am St Mary's

22nd May

9.30 am St Francis

11.am St Mary's

26th May

8.00 pm St Mary's

29th May

9.30am St Francis

11.30 am

At Rivenhall Hall Farm led by Rev. Jonathan

Church Contacts

All Contact should be Via the Churchwardens

Churchwarden Ann Clarke

01376 514825

Churchwarden Peter Hope

01376 502605

Email phope02@gmail.com

Rivenhall Contact Carole McCarthy

01376 512781

Silver End Contact Ruth Aitken

01376 583846

Rivenhall Website

www.stmarysrivenhall.co.uk

St Francis Silver End Website

www.st-francis.org.uk/

Contact the Editor 07904 235101 or phope02@gmail.com

3rd Sunday of Easter

Holy Communion

All Age Worship

4^{ht} Sunday of Easter

Morning Prayer

Holy Communion

5th Sunday of Easter

Holy Communion

Matins

6th Sunday of Easter

Morning Prayer

Holy Communion

Ascension Day Service

Holy Communion

Sunday after Ascension

Holy Communion

Rogation Service

My dear friends,

New life is all around us. Spring is well and truly sprung. Getting used to the changing of the season is so gradual - I'm never quite sure when Spring ends and summer begins. There is plenty of time to get used to the changing patterns. Eastertide, the church season of the resurrection, is a bit like this too. Time get used to the change of perspective. Each week we tell the stories, retell the stories, of Jesus risen from the dead. One story at a time. There is an honesty and wisdom in doing it like this. Some stories resonate with us more than others. I've always liked the story of Jesus returning to the Galilee after the resurrection to find the disciples have gone back to old familiar patterns. Well, the fisherman like Peter and James have. Gone back to fishing in the Sea of Galilee, fishing all night. And early one morning Jesus meets them. Calls them in from the shore. And makes them breakfast on the beach. I can almost smell the smoke of the fire at dawn, the fish cooking in the open air, see the mist lingering, feel the rough beach underneath my feet. And I rest in the warmth of well-worn friendships of these men sharing food with a beloved master who has returned to them.

But it is strange too. After all, their beloved master was brutally killed. And now he is alive. This isn't the usual order of things. People tend to stay dead once they have died. And Jesus was very dead. Crucified and lying in a stone cold tomb dead.

There is deep wisdom in telling these stories about Jesus raised from the dead across seven weeks. It takes a bit of getting used to. We're in good company. Those first disciples didn't get their heads or hearts around Jesus' resurrection straight away either. It took time. Time and patience to absorb the lessons of the resurrection into their worldview, until they were ready for the next step in their journey of faith with Jesus. And that was Jesus leaving them again in the resurrection story we call the Ascension. And they learned the profound joy of walking in faith, Jesus'

Way. As do we. Yours in faith

Jonathan Team Rector, Witham and Villages

(We celebrate the Feast of the Ascension on Thursday 26th May with a service at 10am at St Nicolas Witham and 7:30pm at St Mary's Rivenhall)

We will also be holding a service for Rogation at Rivenhall Hall Farm on Sunday 29th May at 11.30am

Readings and Collects for May 2022

1st May 3rd Sunday of Easter

All Age Worship

Acts 9:1-6, (7-20)

Revelation 5:11-14

John 21:1-19

Collect

Risen Christ,
you filled your disciples with boldness and fresh hope:
strengthen us to proclaim your risen life
and fill us with your peace,
to the glory of God the Father.

8th May 4th Sunday of Easter

Holy Communion

Readings

Acts 9:36-end

Revelation 7:9-end

John 10:22-30

Collect

Risen Christ,
faithful shepherd of your Father's sheep:
teach us to hear your voice
and to follow your command,
that all your people may be gathered into one flock,
to the glory of God the Father.

15th May 5th Sunday of Easter

Matins

Readings

Acts 11: 1-18
Rev 21: 1-6
John 13: 31-35

Collect

Risen Christ,
your wounds declare your love for the world
and the wonder of your risen life:
give us compassion and courage
to risk ourselves for those we serve,
to the glory of God the Father.

22nd May

Holy Communion

Readings

Acts 16:9-15
Revelation 21.10:22-22.5
John 14:23-29

Collect

Risen Christ,
by the lakeside you renewed your call to your disciples:
help your Church to obey your command
and draw the nations to the fire of your love,
to the glory of God the Father.

29th May

Holy Communion Silver End 9.30 am

Acts 1:1-11
Ephesians 1:15-23
Luke 24:44-53

Collect

Risen, ascended Lord,
as we rejoice at your triumph,
fill your Church on earth with power and compassion,
that all who are estranged by sin
may find forgiveness and know your peace,
to the glory of God the Father.

The 50/50 Club April 2022 winners

1st Mrs V Ladkin 2nd Mrs C Hammond 3rd J Claydon

RIVENHALL PARISH COUNCIL

NOTES OF COUNCIL MEETING HELD ON 5TH APRIL AT RIVENHALL VILLAGE HALL

These notes are an abridged version of the minutes.

Present: Cllrs. Abbott (Chairman), Wright (Vice-Chairman), A'Lee, Cairns, Prime and Turner.

Also present: Parish Clerk and 1 member of the public.

Chairman's Report

The Parish Council is planting 104 trees this year, working with the 2 other parishes in the District Ward, Silver End and Cressing, in a "Three Parishes" collaboration which is also contributing to the Queen's Green Canopy to mark the 2022 Platinum Jubilee.

103 trees have now been planted, 100 of which were supplied free of charge by Braintree District Council (BDC) along with spring flowering bulbs. The BDC trees are all native species that benefit wildlife and these were planted on 18th March with the help of children from Rivenhall Primary School and Rivenstars pre-school.

The Parish Council is grateful for the support of BDC and the Rivenhall Playing Fields Association in assisting to deliver the planting project and we would also like to thank a number of parish councillors and residents for generously giving their time to assist with preparation, planting and aftercare of the trees. The final tree to be planted will be a commemorative Oak to mark the Queen's Platinum Jubilee.

Following on from the success of the wildflower verges project, BDC is now starting its programme of 'rewilding' identified areas, which parishes can propose. The Parish Council will be engaging with local residents on where and how best to do this.

All in all, these are very welcome improvements to our local environment, both for our residents to enjoy and to support biodiversity.

Public Forum

The following matters were raised:

- Damaged utility pole at garage site off Beech Road – repeated requests have been made to Openreach to remove the pole.
- It was reported that a child had emerged through the hedge fronting the Bluebells estate causing the driver of a vehicle to make an emergency stop. The Clerk will contact Bellway to request that a section of fencing be installed behind the existing hedge.
- A litter bin has reportedly been burned out at the Albert Moss Playing Field. BDC to be requested to replace this bin with a lidded bin; to provide lids to all exiting bins or to weight the bags within the bins to stop them blowing out in the wind.
- The glass bus shelter on Rickstones Road is currently being replaced.

Matters for Discussion

Annual Report

Copies were **agreed** to be printed and circulated to each property within the parish before the Annual Parish Assembly.

Parking on estate verges and the Village Green

It was **agreed** to request BDC to provide a low railing fence along the main Village Green facing Beech Road and to approach Eastlight asking for the smaller Village Green to be kept vehicle free.

Charitable donation to the Ukraine Humanitarian Appeal

It was **unanimously agreed** to support this appeal in the sum of £500, a cheque will be forwarded to the Disasters Emergency Committee accordingly.

New pole at the recycling site on Oak Road

After much deliberation ECC says it requires a licence to allow the installation of the pole that will support CCTV cameras, also the written support of the ECC Councillor. The written support having been obtained, the Chairman will get the full spec of the pole already installed via ECC at the Tarecroft Wood car park, with a photo. The Clerk will then submit the licence request with that information.

Platinum Jubilee Oak Tree

The site for this tree on the main Village Green has been notified to BDC. A metal plaque will be purchased similar to that for the 60th anniversary tree.

Public Right of Way

F/Path 48

The Secretary of State, in rejecting the proposed closure of the Network Rail crossing at Potters, included comments that this PRoW "...is waterlogged even in dry conditions, obstructed by a significant ditch, and overgrown such that there is very little evidence of the footpath on the definitive line adjacent to Rivenhall Brook".

Members of the 'End to End Nature Care' Group, including an officer from ECC PRoW, are to include this footpath in a survey on Wednesday 27th April and the Clerk will endeavour to obtain a report from them on the condition of this PRoW.

F/Path 59

ECC PRoW officers inspected this footpath recently. The surface was acceptable. While side vegetation growth is beginning to encroach, there is still sufficient width available alongside evidence of previous maintenance. They will monitor the path over the next 12 months to see if the side growth is addressed, and to gauge the surface condition in the winter.

Highway Maintenance

BDC has agreed to the suggested anti-littering sign locations at Rickstones Road, either side of Henry Dixon Road and Oak Road, and these have been included in the programme.

Park Road junction improvements/repairs are still ongoing.

National Highways have again been reminded by the Chairman regarding the broken streetlight at the A12 and Oak Road junction, which has not been working for several years despite the safety concerns at that junction.

Cllr. Wright had met with an ECC Officer undertaking a footway and streetlight survey within the parish – the Clerk will request a copy of this completed survey from ECC.

Broken drains near the Rivenhall Hotel have been reported to ECC Highways.

General Maintenance

Litter Picking – the Clerk has arranged for a replacement Litter Picker who is due to start soon. The advertisement is still open for applications until the end of April. It was **agreed** that additional hours could be considered if required in the future.

BDC are keen to hear if there is any land in the parish that is owned and maintained by BDC that would benefit from re-wilding. Members suggested an area on the Village Green at the corner close to the junction with Rickstones Road and Church Road and subject to consultation with BDC and the RPFA, along the northern boundary of the Albert Moss Playing Field. Information and an invitation for residents to give their views will be included in the Annual Report.

The maintenance contractor will be requested to cut back the surface growth along the footway from the recycling site to the houses along Oak Road.

Planning Applications

New Applications:

22/00390/HH: Single-storey three-bay garage – 321 Rickstones Road.

Members **agreed** to submit an objection to BDC regarding this application as the size of the proposed garage building is considered too large in comparison to the original house. Members also questioned whether the inclusion of the pond and the frontage area within the site boundary was accurate.

22/00664/VAR: Regularise a 3-metre wide cycleway on the Bluebells development, Rickstones Road.

Members **agreed** to submit to BDC that the Parish Council does not object to the widening of the pathway per se but do object to the assumption from the developers that this would be as a supplement to Bellway Phase 4, which has recently been refused planning permission by BDC. Members also strongly objected to the proposed installation of high-level streetlights which would have a detrimental effect on the local residents with light being streamed into their dwellings and the effect the light would have upon the local population of bats.

Ongoing Major Planning Issues

Rivenhall Airfield Waste Site

Following the Site Liaison Committee meeting of 8th March, an ad-hoc meeting was arranged for 13th April at the Information Hub, or the meeting can be attended online as well.

2021/22 Final Accounts

As both the council's annual gross income and expenditure during 2021/22 did not exceed £25,000, the External Auditor's Certificate of Exemption and the Annual Governance Statement 2021/22 were agreed and signed by the Chairman. The accounts for the year will be internally audited, ready to be finally signed off at the May meeting.

Information exchange and items for the May agenda

- * Replacement bus shelter on Rickstones Road
- * Rewilding areas
- * PRoW 48
- * General Power of Competence

Public feedback

Bat habitat along Rickstones Road and Rectory Lane.

Dates of future meetings

3rd May at Rivenhall Village Hall and 7th June 2022 at Henry Dixon Hall, Rivenhall End, both starting at 7.30pm.

Sky Notes May 2022

Summer astronomical twilight persists through the night at our latitude starting on 22nd May. So for the next 2 months or so from that date it does not get fully dark. By the end of May the Sun is setting after 9pm BST.

Mercury may still be glimpsed in early May in evening twilight, low down in the West. It will be close to, and just to the left of, the Pleiades star cluster and the best time to try to see it will be from 9.15pm once the Sun has set and as twilight deepens. On the 2nd of May, Mercury and the Pleiades will be joined by a thin young crescent Moon – a challenge for photographers to

image all 3 objects together. The best way to find Mercury will be to first find the bright star Capella, about half way up the sky in the West. Mercury is almost directly beneath Capella and much lower down in the sky.

Just to the right of and below Capella is a small triangle of stars, all of a similar brightness. They are quite faint and so need a dark sky or binoculars to see them well. In 10 x 50 binoculars Capella and the triangle of stars can be seen in the same field of view. The star in the triangle closest to Capella is called Almaaz, which lies about 2,000 light years from our Solar System. To be visible to the unaided eye from such a distance it must be very luminous. For several centuries, the star has perplexed astronomers because of a regular fading which takes place every 27 years, but which lasts about 2 years. Something is eclipsing the star and the long duration of the eclipse led to calculations that the star must be enormous – hence its title in the 20th century as “the largest star in the galaxy”. More recent work suggests there are 2 stars and a disc of material producing the observed behaviour. As telescopes get ever more powerful, the mystery will be solved one day.

In the pre-dawn sky, Venus, Jupiter, Mars and Saturn form a string of planets across the East and South East. Mars and Jupiter move closer together as the month progresses, with the closest approach being on the 29th. The waning crescent Moon will be close by the pair on the 25th.

There will be a Total Eclipse of the Moon in the early hours of 16th May as the Earth's shadow passes over the Full Moon. Lunar eclipses last much longer than Solar eclipses but unfortunately this one coincides with the Moon starting to set. But for keen observers, a clear early morning sky will see the Moon in the South Western sky entering the darkest portion of the Earth's shadow at 3.30am. The eclipse will then progress so that the Moon will be in full eclipse by 4.30am, just before the Moon sets at 5am.

Sky Watcher

HRH the Queen – Platinum Jubilee Celebrations

We are lucky to witness the longest serving monarch in British History.

The millennium Committee in Rivenhall are having a party on the green on Sunday 5th June in the afternoon, and Silver End are having a party in the park!

We thought it might be nice to have a small exhibition in church for the two weeks either side of the special weekend. I have some bunting and memories!

Please Please share your memories with us. You maybe have a memento like me! If you write me a letter with your memory, or send me an email, I will get it printed and mounted. Maybe you have a photograph? Maybe not on the actual date, but how you looked in 1952! I promise to return all photographs.

My email is: annxclarke@outlook.com

My telephone is : 01376-514825.

I look forward to receiving your offerings. **Ann**

THE 2022 RIVENHALL SCARECROW COMPETITION

As part of the Rivenhall Millennium Committee's celebration of Her Majesty Queen Elizabeth's 70 years on the throne, we are holding a village "Royal" themed scarecrow competition.

This is a bit of fun; so as long as your display has a "Royal" theme; whether it actually contains straw is unimportant! Be imaginative - maybe Royal Mail, The Queens Head, Royal Ascot, Royal Navy, Royal College of Music, Royal Worcester!

Entry to the competition is £10. Entry forms can be collected from 1st May. These will be available from any Rivenhall Millennium Committee member and also from the Rivenhall Stores. But all monies and entry forms **must be** returned to Rivenhall Millennium Committee members (whose names and addresses will be on the entry forms).

We will do our best to advertise where the displays can be seen during that week.

The competition runs from Saturday 28th May until Saturday 4th June; results will be announced and prizes awarded at the Rivenhall

Platinum Jubilee Fete on Rivenhall village green about 5:25 pm on Sunday 5th June (see separate Rivenhall Platinum Jubilee Fete notice in this magazine).

Please do give this a go! Help put smiles on faces - just as so many of you did in our competition last year.

The Rivenhall Millennium Committee

Spinach and Ricotta Lasagne

- 12 dried lasagne sheets (about 225g)
- 6 pork sausages
- 2 tbsp olive oil
- 3 garlic cloves, crushed
- 2 x 400g tins chopped tomatoes
- 1 tbsp dried oregano
- 2 tsp sugar
- 250g bag baby spinach
- 250g tub ricotta
- 60g Parmesan, finely grated

Serves 6

15 mins to prepare and 25 mins to cook

443 calories / serving

1. Preheat the oven to gas 6, 200°C, fan 180°C. Spread the lasagne sheets in a heatproof tray or roasting tin. Cover with freshly boiled water and set aside to soak, separating the sheets occasionally.
2. Meanwhile, squeeze small chunks of meat straight from the sausage skins into a large, shallow flameproof casserole dish or ovenproof frying pan; discard the skins. Drizzle over the oil, turn the heat up to medium and fry for 5-8 mins until golden, breaking up the sausage meat as it cooks. Stir in the garlic and cook for 30 secs, then add the tomatoes, oregano and sugar; season. Simmer for 5 mins until the sauce is thickened.

3. Drain the lasagne sheets, pulling apart any that are stuck (it doesn't matter if they break up into smaller pieces). Stir 150g spinach through the sauce, then add the lasagne sheets and mix so they're well coated in the sauce.
4. Mix the ricotta with half the Parmesan and dollop heaped tablespoons of it over the top. Scatter over the remaining Parmesan, season and bake for 20 mins until golden and bubbling. Serve with the remaining spinach.

THE RIVENHALL PLATINUM JUBILEE FETE

Sunday 5th June 2022

To celebrate the 70 year reign of Queen Elizabeth, there will be an afternoon fete with entertainment on Rivenhall village green starting at 2:00 pm.

After some words of welcome from the Rivenhall Millennium Committee's chairman Bob Turner, our first guests (the Chelmsford Silver Band) will play the National Anthem. Following that, the fete will be officially open with various stalls and information stands, and lovely cream teas can be purchased. The Silver band will play-on and give a selection of their lively music.

A fund raising raffle will be run all afternoon, and we hope to have several interludes provided by members of the Essex Caledonian Band (with of course our very own Jackie Allan from Rivenhall End).

Our resident local singer Charlie Staunton will be entertaining us at various times through the afternoon (as she kindly did for our 2021 Christmas social on the green), only this time the weather will not be frosty (hopefully!)

From mid-afternoon (approximately 4:00 pm) a Bar-B-Q will be available and later the Essex Silver band will play a second set of their tunes.

During Charlie's final session, she will take a break at approximately 5:15 pm during which the raffle will be drawn: this will be followed by presentations to the winners of our special Royal Scarecrow Competition (see the separate notice in this magazine and on the Rivenhall Community Facebook Page). This

competition will start the week before on Saturday 28 May and run for one week.

The fete will close about 6:15 pm.

It is not too late to book a spot for a stall (please contact our Chairman Bob Turner or any Millennium Committee member). We would be delighted if people could offer gazebos - these are hopefully for a little shade from the beating sun - but possibly to provide shelter from a rogue summer shower!

We very much look forward to seeing our residents and again welcoming new residents from the Bluebell development; and of course anyone else who would like to join us.

A Message from Peter Hope Church Warden

Dear parishioners as we approach Pentecost and the celebrations for the Queen's Platinum Jubilee. I would like to express my support and appreciation for our queen who acceded to the throne the year after I was born. The changes that have occurred in that time are simply amazing.

I know my parents were one of the many who invested in a television for the first time in 1952 so that they could watch the coronation in their living room. It is therefore quite something to think that I have never known a world without Television even though I am now 70! I can remember. When we moved to Kemsing in Kent from Portsmouth (I was 3 and a Half) that within a couple of years we had a telephone installed. Because there was a shortage of telephone lines my parents agreed to have a party line. What this meant was that you shared your line with someone else along the road. I can remember picking up the phone and if you were so inclined you could listen in to the conversation of the other person on the line. Very strange.

I can remember my father getting a motor car in around 1958.

It was a Ford Popular (see picture below). Back in those days you needed to know how to fix many basic items on your car. Who can remember making a temporary fan belt with a pair of stockings? Or



starting the car with a starting handle? I know I've done both.

I can remember my dad concreting the back outside the kitchen where the coal bins were located as a joke he concreted a coin in the surface. The idea was that the coalman who carried the sacks of coal round to the back of the house would bend down and spill coal over the ground so that you got some extra coal for free.



Later we had a television that also included four radio channels built-in, how wonderful a combination TV and Radio what ever next but little did we know! I was about 17 when we had our first colour television. In those days you would often spend time watching the test card as Children's hour didn't start until 5 pm and there was no daytime TV.

I went to primary school in 1956 and was in Miss Price's class she must have been in her 70's . In those days we had outside toilets and whatever the weather had to cross the playground to get to the boys toilet. One of my little pleasures at this time was the free school milk. Particularly in the winter when the cream on top froze and it was like eating ice cream.

Miss Price was a hard task mistress and used the old fashion discipline of a dunce's cap and standing in the corner of the room for half an hour.

As we approach the platinum Jubilee (details of the village events can be found elsewhere in the magazine), cast your minds back and let me know what things you remember from the early days of Queen Elizabeth II and write me a short article on the subject.

A Message From Rev. Jonathan

This year we are celebrating Her Majesty the Queen's Platinum Jubilee. This is a truly extraordinary anniversary, unparalleled and unprecedented. As a nation and a parish we will join together to celebrate in many different ways. I plan to be in Rivenhall & Silver End, Faulkbourne and St Nicolas joining in the celebrations on Sunday 5th - which is also the Feast of Pentecost. At St Nicolas there will also be a special service of Choral Evensong for the Jubilee. It will be a glorious day!

COLEMANS COTTAGE FISHERIES

Lakeview Tearooms

Come and enjoy the view whilst
having a bite to eat



Open Thursday to Sunday 9am to 3pm
Breakfast, Lunches
Bar, Snacks
Afternoon Tea
Sunday Roast (01376 516383 to Book)

For more information go to:

<http://www.colemansfisheries.co.uk/witham/cafe/>

Colemans Cottage Fisheries

Little Braxted Ln, Witham CM8 3EX

FREE PARKING 01376 516383

Grow, Flourish. Succeed

**Academy
Nursery**



Opening September 2022, we are
pleased to be offering a nursery
for children ages 2 years and up.

Each session will cost £10 (£20
for a full day)

Nursery sessions will in term time:

Mornings: 8.45am - 11.45am

Afternoons: 11.45am - 2.45pm

All Day: 8.45am - 2.45pm

If you would be interested in a
place, please email

nurserysil@connectedlearningmat.co.uk
with your child's name, date
of birth and the sessions and days
you require.

Aerial Photography

Barns

Chimneys

Roof Tops

COST EFFECTIVE, SAFE ACCESS,
ROOF TOP INSPECTIONS BY
DRONE WITH NO NEED FOR
SCAFFOLD, TEMPORARY WORK
OR STRUCTURES REQUIRED.



NON DISRUPTIVE, FAST AND
PROFESSIONAL SERVICE, SAME
DAY REPORTS AND
RECOMMENDATIONS FOR
REPAIRS

FULLY CAA AND CIOB
REGISTERED, QUALIFIED AND
INSURED SERVICE. CARRIED OUT
BY EXPERIENCED SURVEYORS.

Call to discuss your requirements;
Chris: 07817219133
Jim: 07966403783
email: highsightse@gmail.com

Historic Buildings Monitoring

Building Inspections

Estate Records

ANGLIA TREE SERVICES

Specialist tree surgery

Residential & Commercial Customers

CROWN REDUCTION • FELLING • TOPPING

HEDGE TRIMMING • ALL GARDEN WORK

STUMP GRINDING

For a quick, tidy and friendly service call:

Tel: 01621 892831



7 DAYS A WEEK • EMERGENCY SERVICE AVAILABLE • FULLY INSURED



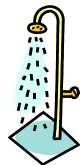
Philip Little

Property Maintenance Magician

Local service at local prices

Knowledgeable and friendly

07973 129808 or 01376 515257



Serving the Local Community for over 125 Years

G. COLLINS & SONS

Funeral Directors Ltd



30 RAYNE ROAD, BRAINTREE, CM7 2QH

01376 342266

4 THE STREET, WHITE NOTLEY, CM8 1RH

01376 583750

WWW.GCSFD.CO.UK

Beautiful Rooms For Rent In Witham & Braintree

We have 4 Lovely houses
2 in Witham—2 in Braintree
With and Without en-suites
£90—£130 per Week

(All inclusive of Rates, Light, Heat, and with Broadband)

See our Website:- www.jbwpartners.co.uk

Or Call

John
07850 161629

Mavis
07714 579783

Michelle
07966 323914

**HELP WITH
FUNERAL ARRANGEMENTS
RICHARDS
FUNERAL SERVICE**



01376 513114

78 Newland Street, Witham, CM8 1AH

From advice on how to register a death to making all the arrangements, we're here 24 hours a day.

Members of the National Association of Funeral Directors
A British Owned Company www.dignityfuneral.co.uk

SpeedyBroadband.co.uk

***Sick Computers my
Speciality***

- Home Networking Problems Sorted Out
- Computer Viruses Removed
- Operating System Upgrades
- Upgrade to Windows 10

**FOR YOUR FREE SURVEY AND
QUOTATION CONTACT**

Peter Hope

Peter.hope@speedybroadband.co.uk

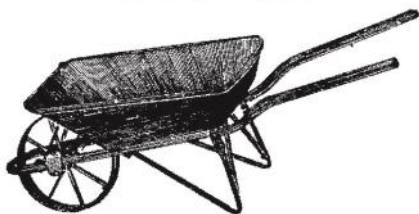
Tel: 01376 502605

Mob: 07904 235101

Website

www.speedybroadband.co.uk

**Ya Garden
Cares**



**Thorough Attention on
Bed Maintenance,
Mowing & Clearance**

**Telephone
Barry: 07732337626**



You may read in the magazine that the Nature Care Group have been counting Cowslips not sure I'd know where to start!





Sending a Message of Support to Ukraine



Who recognises this local Church which is no longer in commission?



**My Camelia looked lovely
until the frost got it**



**The Bluebells are as always stunning in our local
woods even some white ones**



Can you spot the Snake in the Churchyard photo by Dave Atkinson who fastidiously records all the snakes and other creatures sheltering in the Churchyard

The Maldon mud race

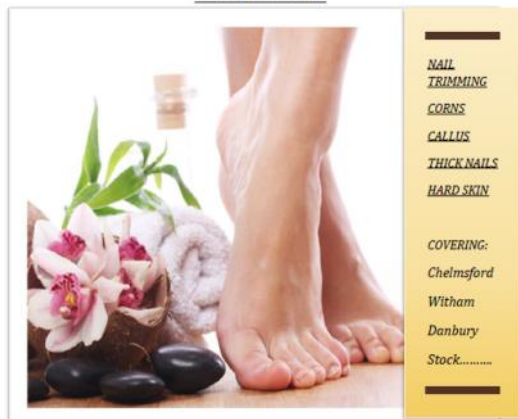


FOOT HEALTH PRACTITIONER



THE SMAE INSTITUTE

HOME VISITS



NAIL
TRIMMING
CORNS
CALLUS
THICK NAILS
HARD SKIN

COVERING:

Chelmsford
Witham
Danbury
Stock.....

JAMES NEWMAN (MCFHP,MAFHP)

TELEPHONE: 01376 519036

MOBILE: 07793971351



**CARING FOR THE PETS OF WITHAM AND
THE SURROUNDING AREA FOR 25 YEARS**

SPECIAL O.A.P. SURGERY THURSDAYS

CAT ONLY CLINIC WEDNESDAYS

Late night surgery Wednesday till 8pm

**Surgery Opening hours
Monday to Saturday for appointments**

Tel: 01376 500038

www.brookendvets.co.uk



PC Doctor
Operations Limited

**For all your computer
requirements including:**

Virus prevention, detection & removal
Broadband, Networking, Wireless & Firewall set up
Email & SPAM filtering
Hardware Repairs & Upgrades
Software Faults & Crashes
Backup Solutions & Data Recovery
Software Installation & Removal
Hardware & Software Supplied
Website Management • Computer Training

**Health
Checks
£39.99**

Office: 01621 891064 • Mobile: 07990 565336

Email: support@pcdocops.co.uk

Website: www.pcdocops.co.uk

Monthly subscription service available to provide complete "peace of mind" and allow you to spread the cost of your IT requirements.

Please contact for further information.

REYNOLDS CARPENTRY SERVICES

**For all Carpentry, Joinery
& Cabinet Making Requirements**

CSCS Registered

30 Years Experience

4 Years Apprenticeship

City & Guilds and

Advanced City & Guilds Qualified

Free estimates – No obligation

All building work considered

Can also make items to order

also

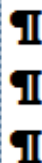
**'curtain poles, tiling, flat packs,
kitchens, doors, sheds etc, no jobs
too small'**

Contact

07889 110962

Answer phone at other times

Jeremy Larke Television services



Telephone: 01376 513645

Mobile: 07947 601619

Email: telerepair@aol.com

All Television Systems Catered
for Freesat, Freeview, Sky.

- Installations & Repairs To all makes and models
- Full Plasma & LCD Fitting Service
- Wall Mount Brackets Supplied and Fitted
- Aerial & Satellite Dishes Fitted
- Freeview, Freesat & European Channels
- View and Control Your Sky in Other Rooms
- Aerial and Telephone Extension Points Installed



Don't Delay Call Today

Janet C Davies

Dip. F.D. M.B.I.F.D

**BRAINTREE & KELEVEDON'S LADY FUNERAL
DIRECTOR**

Offering a full and Comprehensive Funeral Service

Telephone 01376 339300

For a Personal and Caring 24 hour service

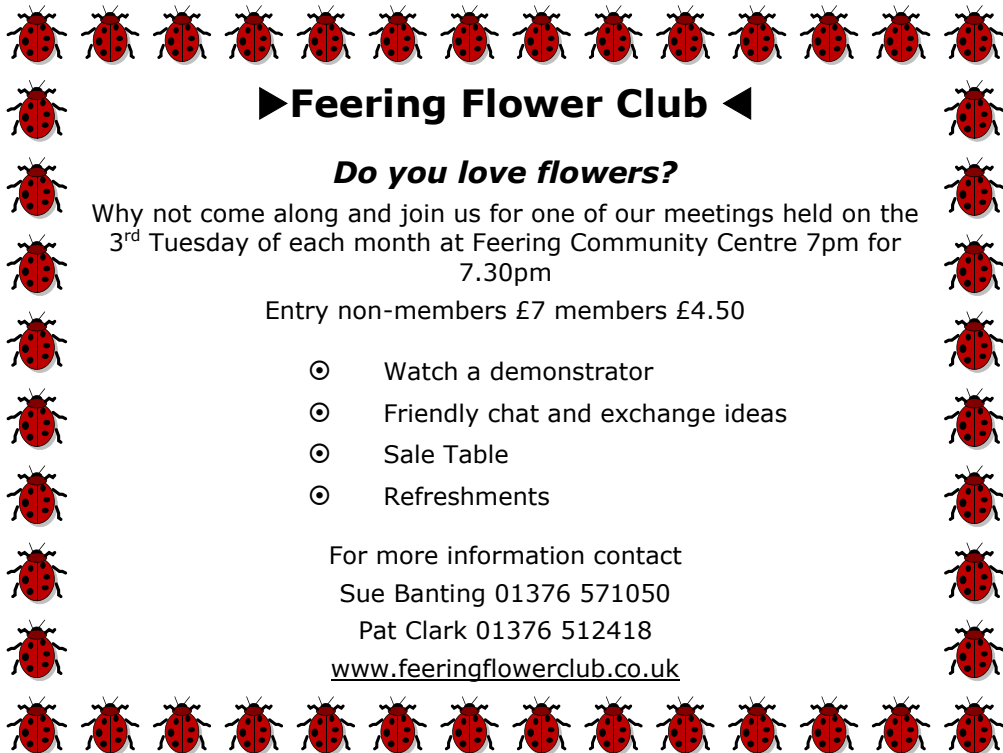
Local Chapel of Rest at Fern House 72 Coggeshall Road Braintree and
Victoria House, Trews Gardens, Kelvedon

Funerals are arranged and carried out in the Traditional Manner but
With 'The Gentle Touch'

Pre payment Plans available—Floral Tributes arranges—Woodland Burials
Bereavement Care—Low Cost Simplicity Funerals - Memorials—Printing
Catering—DWP Funerals

Part of the Hunnaball Family Group

Members of the National Association of Funeral Directors



►Feering Flower Club ◀

Do you love flowers?

Why not come along and join us for one of our meetings held on the 3rd Tuesday of each month at Feering Community Centre 7pm for 7.30pm

Entry non-members £7 members £4.50

- ⊙ Watch a demonstrator
- ⊙ Friendly chat and exchange ideas
- ⊙ Sale Table
- ⊙ Refreshments

For more information contact

Sue Banting 01376 571050

Pat Clark 01376 512418

www.feeringflowerclub.co.uk

DANIEL ROBINSON & SONS

Incorporating
W C BROWN & SONS

Independent Family Funeral Directors & Monumental Masons

A professional, caring, 24 hour service

Private Chapel of Rest

Fleet of air conditioned limousines

Horse drawn funerals available

Traditional and contemporary funeral services to suit your wishes

Funeral pre-payment plans

Arrangements may be made in the comfort of your own home, if preferred

Haslers Lane
Great Dunmow
Tel: (01371) 874518

7 Manor Street
Braintree
Tel: (01376) 320582

31 High Street
Halstead
Tel: (01787) 475533

www.drobinson.co.uk

Turning the pages of History

Research by Tracy Scott

Shortly after November 1975 the return of the board was hung in the Church given the names of the Rectors of Rivenhall, which is now up dated as time goes on. At this time our Rector, David Nash, started a series of articles of history taking us through the men that held this post through the centuries, but also the face of the changing of Rivenhall village itself, which is very different from where the houses are today and the importance of Royalty connections to the church life. So let us first start with his introduction in the Parish Magazine from November '75 up to part 4.

Rectors of Rivenhall Part 1

By Rev. David Nash

The new board with its new gold lettering is due to be returned to its rightful place shortly. This would seem to be a good time to run a series of articles upon the subject. As an introduction to the Rectors, it is necessary to spare a few words upon the Parsons of Rivenhall! There are at least two names on our list who were spoken of as "Parsons"; they were respectively Robert, who became a Knights Templar. We may assume in the twelfth century (we do not know his other name) and John de Cleye, Parson in 1379. It is highly probable that these were among several men who ministered to the needs of the mediaeval village; they lived in a modest parsonage in what is now the north-east corner of the churchyard. They are distinct from the average run of Rectors, some of whom may never even have visited Rivenhall except for their Institution! Such men as Henry de Bluntesdone, who was High Almoner to Edward I and James Goldwell who is probably to be identified with the Bishop of Norwich of that name 1472-99 were the kind of Rector of Rivenhall who were largely absentee; we suspect that the men whom they employed to do their work were often referred to as Parson of Rivenhall. We have included the two

parsons in our list of Rectors since, for all we know, they may have actually been Rector, but we believe that there must have been a large number of assistant clerics who 'stood in' for the Incumbent during the middle ages.

Part 2

The men we are considering this month lived in the earlier part of the Middle Ages. The parsonage house stood in the North-East corner of the churchyard near the present lilac tree; roughly built – probably of wood on top of a low turf-flanked wall, it occupied a floor space of about 2/3 the present Rivenhall village hall. The parson could look out across the Medieval village, now a pasture, to the only other fair-sized dwelling which would have stood then as Rivenhall Hall, on the site of the present farm of the same name. We can picture the smoke rising from the little cottages with their narrow streets; children paddling in the same stream that we see today – called by our forefathers "The Cressing Brook".

Sunday by Sunday the people would wend their way through an opening in the North side of the churchyard and through the North Nave door (TS note: this was reopened up a few months before this article) for the 9 am Mass. At this time the chancel was more squat and half its present length, but we can still gaze at the self-same plaster of the round headed windows which these people knew more than 800 years ago! The site of this medieval community was marked on last century maps as 'Little Nunnery' – so the Rivenhall Curates-in-charge may have been chaplains to a religious-house and have eked out their living by this means.

The first two names on our list are "Robertus, persona de Riwendale" mentioned in the Knights Templars' survey of 1185 and Peter de Rossa who died on Ascension Day 1255. These two were probably both members of the de Rochester family who sometimes used the surname 'Merk'. The first-named would have been here around 1170 when Thomas a Becket was murdered (Henry II reign). The last-named, Peter de Rossa became a Knight Templar shortly before his death. He was a close relative – (nephew of uncle) of a

certain Robert de Scales, who owned a great deal of land in these parts and was a member of the de Scales family who were men at arms under William the Conqueror. John de Antioch followed in 1255, as 3rd rector on our list; the living was worth "no more than 50 marks per annum." John got the job as a reward for being clerk to a man called Geoffrey de Lezignan, brother of King Henry III.

Part 3

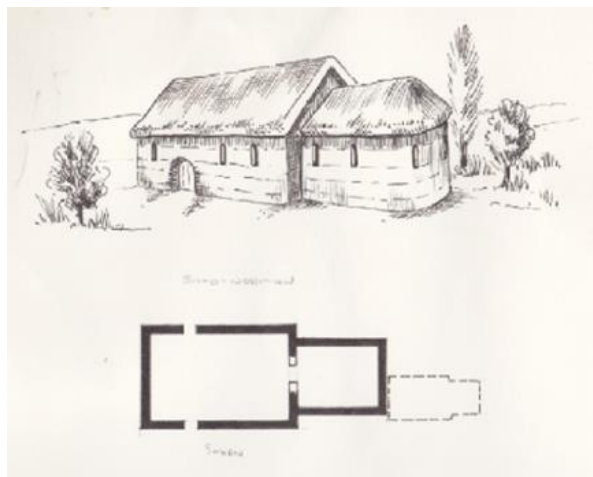
Last month we had reached the 3rd rector on the list:- his name was John de Antioch and we can picture him living in the latter half of the 13th century in the rather mean early Medieval rectory, in the North East corner of the churchyard. In his time the chancel of Rivenhall church ended in a semi-circular Norman apse and the roof was probably thatched. Clods of earth were used as part of the walls of the rectory. John had been clerk to King Henry III brother and we shall now see how royal connections changed the history of Rivenhall Church.

In the 14th century, we see changes; the Norman apse is removed and the chancel is lengthened to twice its original length; bright red tiles adorn the church floor and plans are afoot to build a tower; meantime a ground level bell-cage housing one solitary bell, stands near the position of the present notice-board. At nine every Sunday morning, the villages having wended their way up to the church from what is now the farmers meadow, hear a lone bell toll its last few strokes, as the shadow on the scratch-dial on the South window of the nave shows 9 am., Time for Mass. The rectory, still in its old position, is enlarged into an 'L' shape and is now a more substantial building. The men who live there are but deputy parsons to the real rectors who seldom come to Rivenhall: important men these, they are known as 'pluralists' and they receive the revenues from many church appointments as payment for crown offices. It is probable that such building as went on at Rivenhall in the early 14th century, was paid for by these rectors as a kind of 'conscience' payment.

Rectory 4 was Henry de Bluntesdone – High Almoner to King Edward I. It was the year 1300, and if a Pope had never heard of Rivenhall before, Beniface 8th was to do so in that year. The Pope knew that Henry de Bluntesdone enjoyed the canonries of Salisbury, Wells, Chichester & St. Paul's London; and that he was absentee vicar of Brightlingsea; he did not know that Henry was

also in possession of the Archdeaconry of Dorset; the livings of Gussage, Dorset; Grittleton, Wotton Bassett and Hannington Wilts; Middleton, Yorkshire...and RIVENHALL, Essex.

On 25th June 1300, Edward I, petitioned the Pope and asked that Henry might keep these pluralities; we are fairly safe in assuming that the powerful Edward was successful.



This is a reconstruction
Of the Saxon-Norman
Church C980

I would like to thank Rev. David Nash for letting me use his works to help keep the history of Rivenhall alive for everyone to understand the past of this once very important village.

In the July issue we will be looking at the next Rector: William de Lalleford and the results on the plague (Black Death) and how it changed our church and village.

RIVENHALL GARDENING CLUB

The Club's monthly meeting, incorporating the Daffodil Show, was held in Rivenhall village hall on Tuesday 12th April 2022. Members and visitors were welcomed and a number of notices given out. A members' visit to R.H.S. Hyde Hall in July was discussed as was a possible afternoon tea in August.

Gladioli corms were distributed for showing in the July Flower

Show. Malcolm Bradbury, who normally judges our Daffodil Show, was unable to be with us this year due to ill health, but at very short notice we were pleased to welcome Tom Carpenter to judge the entries.

SHOW RESULTS

MONTHLY CLUB COMPETITIONS

Horticultural

1st Maurice Bacon (One Entry)

Flower of the Month

1st Shirley Bacon 2nd Susan Donnell 3rd Cyril Philpott

Domestic

1st Janet Shead 2nd Karen Dakin 3rd Jenny Claydon

R.G.C. Shield - Best Bloom
Daffodil Society's Bronze
Medal

JENNY CLAYDON

Alpine Shield
MAURICE BACON

Photography- Essex Land-
mark

SUSAN DONNELL

Daffodil Society's Diploma
Miniature Daffodil Award

SUSAN DONNELL

Junior Class-Picture of a
Farmyard Animal

Charlie Dakin

Domestic-Marble Cake

SHIRLEY BACON

Photography

1st Karen Dakin 2nd Tracy Scott (2 entries)

The next Club meeting will be on TUESDAY 10TH MAY, 7.30pm in Rivenhall village hall. Our speaker will be Jan Currie, our weather man, making a welcome return to talk about "The day it rained Crabs and Frogs'. For those who do not know him Ian is an expert on all things concerning weather, is very interesting and is full of amusing facts. He has published books and used to write in the Garden News.

We look forward to seeing him again. Competitions will be: Horticultural-any vegetable. Domestic-Date and Walnut Cake. Flower of the Month. Photograph of the Month. Entrance £2 to include refreshments. There will be the usual raffle. New members and visitors welcome. For further details contact the Club Secretary on 01376-512781.

Spring Garden Crime Prevention (Part 1)

Hopefully by the time that you read this Spring will be established with the weather improving, inviting us out into our gardens. It is a good time to take a look around; are your fences and gates in good condition do you have good quality locks on gates, will they keep the unwelcome intruder out? To the front of your property where possible keep fencing, planting, and hedges to about 1.2m in height so that an intruder is not hidden from view. Protect your rear garden with 1.8m strong fencing, close boarded wooden fencing, and gates are a good choice and this can be topped with trellis or a plastic spiky topping such as www.defendastrip.com/ (warning signs needed). Panels should not be able to be lifted out of the posts, and avoid your fencing becoming a ladder by ensuring that the horizontal cross battens are facing into your garden.

Defensive planting: Security does not have to be just about locks, bolts, and spiky fence toppings; nature provides some excellent plants to keep people away. There are a number of attractive, fragrant plants of a spiky nature such as climbing roses, pyracantha and berberis and other planting of a dense nature that can work quite well. Have a chat at your garden centre or with the Royal Horticultural Society (RHS) for the right plant for the right location. We actively work with the RHS at Hyde Hall and there are a number of mature examples of defensive planting that can be viewed there, and some very knowledgeable people that can advise you.

New plants: Larger plants etc. can be secured to land or rootball anchors or plant through chicken wire covering the

area with soil. Cement or bolt down containers to the ground. The RHS or your local garden centre or DIY store should be able to help.

Working in the garden: It is easy to get engrossed in what you are doing when working in the garden, if the house is empty it is wise to close and lock the door (don't forget the key though!). Remember when you stop for a break put your tools away, and at the end of the day as well as putting tools away put the wheelbarrow and wheelie bin away too. "It will add insult to injury" if your tools are used to break into your house, a neighbour's, nearby building such as a church, or provide a climbing aid or method of carrying things away.

New tools and lawn mowers: Be mindful of how you dispose of the packaging to your new purchases; don't advertise it to the thieves and burglars with your empty boxes on display outside for roadside collection. Fold boxes inside out or break them up and put them in bag for collection. If you are not using your lawn mower, jet washer or other put it away out of sight from prying eyes.

Property marking: It may deter a thief if your property or flower pots is visibly security marked with your house number and post code such as www.creproducts.co.uk or labelled if a forensic (hidden) property marking system is used such as www.smartwater.com or www.selectadna.co.uk. You can also record the serial numbers of any tools at www.immobilise.com/ . If your property does get stolen with property marking and/or recording, there is a greater chance of you getting it back.

For suitable security products look for the Secured by Design or Sold Secure logo's and for further garden security advice see the following webpages:

www.essex.police.uk/cp/crime-prevention/

www.securedbydesign.com

www.soldsecure.com

www.rhs.org.uk/advice/profile?pid=606

End to End Nature Care.

Our season of Wednesday evening outdoor activities is already underway following the cowslip count on 20th April and the evenings are lengthening meaning we can fit more and more in after we meet at 7pm.

Spring is always a great time to study birds as most of them are busy breeding at this time of year and so are displaying their best plumage and often busy singing and performing various other behaviours in an effort to defend a territory or attract a mate. By the height of summer many species will have finished mating or at least be raising their broods, by which time they start to moult out of their prime breeding plumage to become what is known as "eclipse". Their singing also begins to wane as territories are established and mating pairs have been formed.

We are fortunate in mid-Essex to still be visited by numerous Nightingales (*Luscinia megarhynchos*), who migrate here from the northern half of Africa to breed in our summer. They arrive in the latter half of April and immediately seek to breed. Visually they are fairly unexceptional brown birds of a size midway between a Robin and a Blackbird but they are primarily heard rather than seen. Their preferred habitat is thickets, hedges or coppiced woodlands where they can skulk and use their brown colour as camouflage while at the same time advertising their presence by one of the richest, most powerful songs of any UK bird. Blackbirds and Thrushes can be impressive singers but when one hears a nightingale there really is no mistaking it.

When arriving in April, Nightingales can potentially be heard singing almost anywhere, primarily at dusk but possibly at any time of the day while they are seeking a mate. Eventually they tend to home in on certain regular sites, possibly because of some homing instinct or maybe just because they are where the best breeding habitat is to be found. The Essex Wildlife Trust's Fingringhoe Wick is perhaps the more famous site for hearing them in Essex but they are known to breed in other local sites including Tiptree Heath and Danbury

Common. Our group has heard them at all these sites and this month we are heading back to the latter where at times in the past we have heard several Nightingales (mainly males advertising their presence to females) singing simultaneously. It can feel truly magical as the darkening woodland rings with their almost operatic calls.

Later in the month we are heading over to the airfield to look for interesting flints following the talk we had about the material earlier this year. Natural flint, unworked by humans, can still display a wide array of forms and features with variable colour and shape (reflecting structures such as worm burrows in the late Cretaceous seabed) and may contain fossils like sea urchins. The rolled, rounded flints so common in our areas represent eroded and reworked stones moved by river and the glaciers of the recent Ice Age.

Forthcoming events are noted below but our full schedule can be viewed on our website www.e2e.silverend.org and our Facebook group (End to End Nature Care) and we will also post photographs from the events on both. All are very welcome to come along to any of our events; unless they involve an external expert or guide then they are free of charge (any fee or required donation will be noted in advance) and no prior knowledge or experience is needed. If you have any questions then I can always be contacted on simon@e2e.silverend.org or 07947 388180.

Simon Taylor

DATE	TIME	ACTIVITY
04 May 2022	18:30 for 19:00	Danbury Common, primarily for Nightingales. Meet at Stovern's Hall Farm at 18:30 to car share or at the Armoury car park, just past the Cricketers Arms (TL779046) in Danbury at 19:00.
11 May 2022	18:30 for 19:00	Birdwatching at Layer Breton causeway, Abberton Reservoir. Meet at 18:30 at Stovern's Hall Farm (TL825172) to car share or at 19:00 at the causeway (TL950166).
18 May 2022	19:00	Spring plants amble at Silver End. Meet at the Western Arms car park.
25 May 2022	19:00	Flint hunt at Rivenhall Airfield. Meet on the lane by Allshots industrial park (TL830200).
01 June 2022	19:00	Aquatic surveying in the River Brain at Hole Farm, Faulkbourne. Meet by the Hole Farm barns accessed at the end of the lane under the railway line (CM8 1RJ or TL802176).

A Lincolnshire Ramble (by John Macrae)

Back in March this year, Jane and I decided to spend a few days in Lincolnshire. We based ourselves in the town of Sleaford (where I was born and where I spent my early years). I had an ulterior motive - for quite some time I had been keen to walk the length of the 12½ mile long Sleaford Navigation. But first

Having booked accommodation for Friday and Saturday, we drove up early in the morning and visited the Battle of Britain Memorial Flight Visitors Centre at RAF Coningsby. I had booked a guided hanger tour so we were close up to their awe inspiring Lancaster Bomber, their Dakota, and their magnificent collection of Hurricanes, Spitfires and other aircraft.

RAF Coningsby is adjacent to the village of Tattershall where I again looked in awe at Tattershall Castle - a truly magnificent 15th century red brick castle that I still remember fondly from my formative years. What a symbol of power and wealth that is!

Anyway my canal walk. The following day Jane dropped me off at Chapel Hill, from where the Sleaford Navigation leaves the navigable River Witham and heads eastwards. It was a gloriously sunny, spring day as I headed off on my very rural stroll. Curiously this canalised River is called the River Sleas in its upper reaches, but is known as the Kyme Eau for much of its length (this is similar to our own River Blackwater which is known as the River Pant above Braintree).

The land here is very flat and very fertile - it is part of the Fens which until the 1700s was a vast area of natural marsh. So virtually every parcel of land is intensively arable and highly productive. The navigation has seven locks along its length, most of these are sited by former mills.

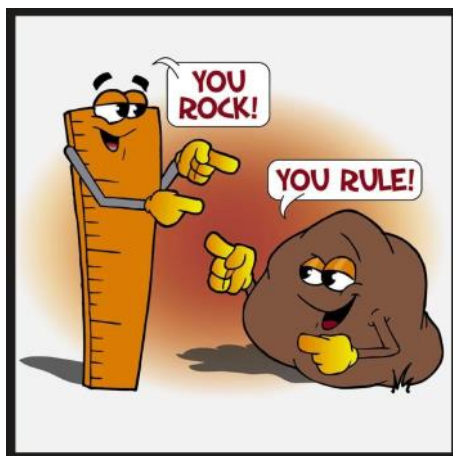
The canal only passes through one village on its route, that is South Kyme, a picturesque spot. I thought I might buy a well needed pint at The Hume public house but sadly it was

too early in the morning. So I strolled on a few more miles before deviating off-course for a deserving drink in the village of Ewerby. Well refreshed I returned to the navigation and headed ever-closer to Sleaford. Nearing the town, the adjacent fields became pastures and the canal is an absolute delight. I passed by Cogglesford Mill, a restored water mill about half a mile from the town centre: we visited that the day before and it is well worth viewing.

When I was a child in Sleaford, the navigation was abandoned and forgotten; hidden behind semi-derelict warehouses and industrial plots. The canal head is very different now! It is accessible, landscaped, restored and a great asset to the town.

Most people associate Burton on Trent with the former Bass brewery, but Sleaford too was very much associated with Bass. In 1907 the company built the largest maltings complex in the UK in this market town because the surrounding land was perfect for growing malting barley. Sadly this massive and impressive brick complex was closed in 1959 and to this day it stands magnificent in its gently deteriorating grandeur.

It was very interesting to re-visit the town of my birth and to amble around its town trail, learning about its history and its traditions. Where to next I wonder?



General Pattern of Sunday Services:

	All Saints Terling	St Mary's Fairstead	St Germanus Faulkbourne	St Etheldreda's White Nofley	St Francis Silver End	St Mary's Rivenhall
1st Sunday	9:30am All Age Service		10:00am Holy Communion	11:00am All Age (Lay lead)	9:30am Holy Communion	11:00am All Age service
2nd Sunday	9:30am Holy Communion		Possible Family Service		9:30am Lay-led	11:15am Holy Communion
3rd Sunday		5:00 Holy Communion		11:15am Holy Communion	9:30am Holy Communion	11:00am Matins
4th Sunday	9:30am Holy Communion	10am BCP Matins	6pm Taize		9:30am Lay-led	11:15am Holy Communion
(if a 5th Sunday)	T/F/F/WN Parishes United Service	T/F/F/WN Parishes United Service	T/F/F/WN Parishes United Service	T/F/F/WN Parishes United Service		11:15am SE/RH United Service

The Chart Above is an indication of the Pattern of Services across the Witham Team.

CRAFTING CONNECTIONS

**A FULLY INCLUSIVE COMMUNITY
GROUP FOR ALL**

**RUN BY SALLY CLARKE
REIKI PRACTITIONER
LEVEL 2**

**ST FRANCIS CHURCH.
SILVER END**

**THURSDAYS
2-5**

**COME FOR AS LONG AS YOU WISH
ARRIVE WHEN YOU'RE ABLE
£5 FEE TO COVER COSTS**

**A SAFE SPACE TO GATHER AND CHAT ABOUT ALL THE
CHALLENGES OF LIFE
WHILE ENJOYING SEASONAL CRAFTS, CAKE,
AND CRACKING COMPANY!!!**

contact Sally on: 07790898749.
or on social media: Solilaqui Reiki Strength Harmony Awareness Wellbeing

Cygnus Trio Charity Concert

In support of the House of Grace, a local charity supporting homeless people.



Javier Montanana, violin, Hannah Lewis, cello
Cesar Saura, piano

This greatly admired ensemble return to play rarely
heard masterpieces by Beethoven and
Tchaikovsky.

Witham URC church on 28th May 2022, 7.30p.m.

*

Admission free, but please donate generously!
Refreshments served afterwards.

Organisations in Rivenhall

Clerk to Parish Council	Keith Taylor	516975
Email parishclerk@rivenhallparishcouncil.net	meets every first Tuesday	
End to End Nature Care	Simon Taylor	01621 810141
Gardening Club	Carole McCarthy	512781
Meets on 2nd Tuesday at 7.30pm in Village Hall		
Carpet Bowls	Mick Marshall	512836
Meets every Thursday at 7.30pm in Village Hall		
Playing Fields Association	Mick Marshall	01376 512836
Spread Your Wings Dance Acam	Laura Pearson	01376 741317

Facilities

Hire of Village Hall	email rivenhallvillagehall@gmail.com	
Hire of Henry Dixon Hall	Tracy Scott	571551
Oak Store Rivenhall "Open All Hour" Tel AJ		01376 538838

Organisations in Silver End

Clerk to Parish Council	Mrs B. M. Temple	618464
Email parishclerk@silverendparishcouncil.gov.uk		
Bowls Club	Paul Mann	07551 006906
Children's Centre	Faye Savage	587960
Neighbourhood Police	Braintree Policing Dial 101	
Congregational Church	Sharon Gray	583913
Friendship Club	Maureen Green	585275
Silver End Gad Abouts	Denise Sullens Smith	07952 992782
Gardening Club	Liz Woor	585586
Guiding Group	Carol Hutchings	07857 663959
Neighbourhood Watch	Judy Hill	07896 975839
Scouting Group	Elaine Hall on +44	7885 489788
St Mary's Church (R.C.)	Vivian Phillips	583598
Tennis Club	Jason Cairns	584581
Workers Educational Assoc.	Brian Gillion	583706
Luncheon Club	Helen Thomson	583255
Doctors Surgery		583387
Silver End Heritage Society	Jackie Nesbitt	07707 084608
Silver End United Football Club	Mark Edgell	584639 Web
Site www.silverendunitedfc.co.uk		
Women's Institute	Brenda Warnes	07931 548193
Community Warden	Jackie Windard	07785 515526
Post Office in Co-op - please note that it closes at Lunchtime 1-2pm		
Closes 1 pm Wednesday and 12.30 pm Saturday		
Library: Tues & Thurs - 2pm to 6pm Saturday 9am to 1pm		

HUNNABALL

Family Funeral Services



Here **whenever** you need us

Funerals | Memorials | Pre-paid Funeral Plans

Hunnaball of Witham

1 Coach House Way, Newland Street, Witham CM8 1YJ

01376 511592

www.hunnaball.co.uk

JANET C DAVIES

Lady Funeral Directors



**Our Ladies
in Hats**

*"funerals with
a gentle touch"*

Funerals | Memorials
Pre-paid Funeral Plans

Janet C Davies of Kelvedon

233 High Street, Kelvedon CO5 9JD

01376 573691

www.hunnaball.co.uk

DRH LANDSCAPES

Est. 1987

Quality Comes 1st

**Garden Landscape and Design – Hard Landscaping – Soft Landscaping
Grounds Maintenance for Private and Commercial Premises**

- Are you planning to redesign and landscape your garden?
- Does your garden just need a little TLC or a complete makeover?
- Are you looking for assistance with regular garden maintenance or perhaps a one-off visit to get things back in order?
- Is your lawn looking tired? Would you like a new replacement lawn or artificial lawn instead?

We are a family run business with over 30 years of experience working in the ever changing world of landscape management, business regulations and horticulture, with full public and employer liability insurance, as well as being a fully registered waste carrier with the Environmental Agency.



OFFICE: 01376 514142

We welcome...



EMAIL: info@drhlandscapes.com

www.drhlandscapes.com

Harcog Centre, 77-83 Maldon Road, Witham, Essex CM8 1HP

